

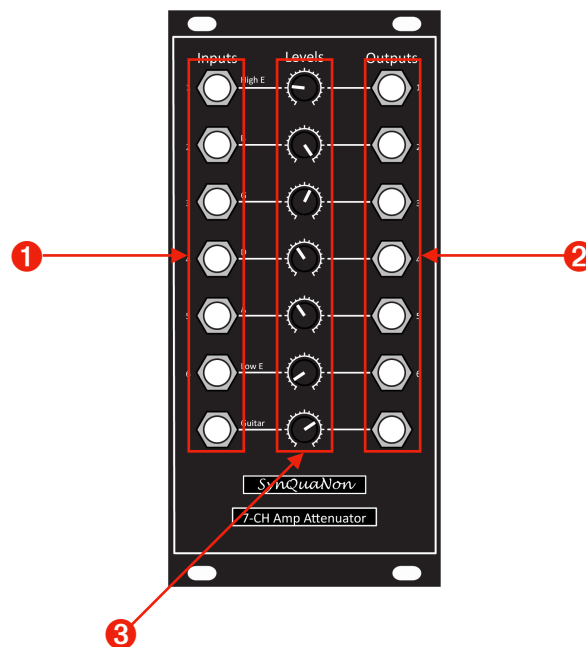
7-Channel Amplifier-Attenuator

Low-noise AC-coupled attenuation or amplification up to 40dB

Introduction

Congratulations on your purchase of this SynQuaNon product! It is our belief that our products will enable you to find new and interesting ways to create custom sounds with your synthesizer and other SynQuaNon modules. Check out our full line at www.synquanon.com.

Module front panel overview



- 1 Inputs AC-coupled audio inputs 1 - 7; accept +/- 12V signals.
- 2 Outputs AC-coupled audio outputs 1 - 7; up to +/- 12V signals.
- 3 Gain controls Individual potentiometers adjust gain from zero to level selected on rear header (range options are 0-20dB, 0-30dB, 0-40dB).

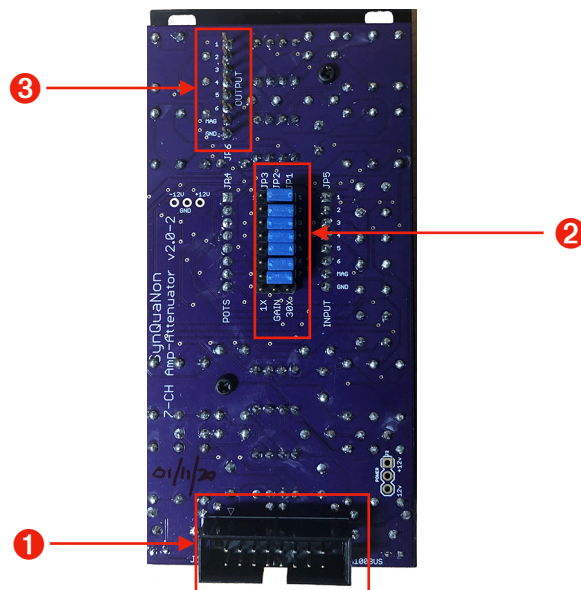
Overview

The 7-Channel Amplifier-Attenuator can be ordered with one of three gain options: 20 dB, 30 dB, 40 dB.

Gain controls allow you to adjust the gain from zero to full-scale in the amplified string outputs.

Ideal for guitar or bass single-string processing.

Module rear panel overview



- 1** A100 Bus Keyed power connection with reverse polarity protection. Red stripe is on the left.
- 2** Gain Select Header Use the shorting plugs to select the amplifier gain range - unity gain is on the left (for attenuation use) and either 10x, 30x, or 100x is on the right.
- 3** Output Header Signals from output jacks are available on this header for patch cable-free connections to other SynQuaNon modules.

Features

- Precision metal-film resistors for close channel gain matching.
- Low-noise audio op-amps for optimal AC performance.
- Selectable gain range (1x or 10x, 30x, 100x) for output on back of the module.
- Adjustable gain or attenuation to zero within each selected gain range.
- Ideal for guitar or bass single-string processing.
- Pairs well with 13-Pin Input Breakout, Hex VU Meter.

Technical Specifications + Downloads

Width	12 HP	Gain	0 dB (1x range)
Depth	40 mm		0 - 20 dB (10x range)
Power	15 mA @ +12V		0 - 30 dB (30x range) optional
	15 mA @ -12V		0 - 40 dB (100x range) optional
	0 mA @ +5V	ModularGrid	7-Channel Amplifier-Attenuator

Reverse power protection, resettable fuses, extensive power supply filtering.

Support

In case of difficulty:

1. Make sure power is available to the Eurorack and that it is turned ON.
2. Check the rear module power connection (turn OFF Eurorack power first)
3. Check patch cables for continuity or shorts.
4. Check level settings on front panel. Check gain select header on rear of module for proper gain range selection (turn OFF Eurorack power first).

For additional information please feel free to contact us at support@synquanon.com